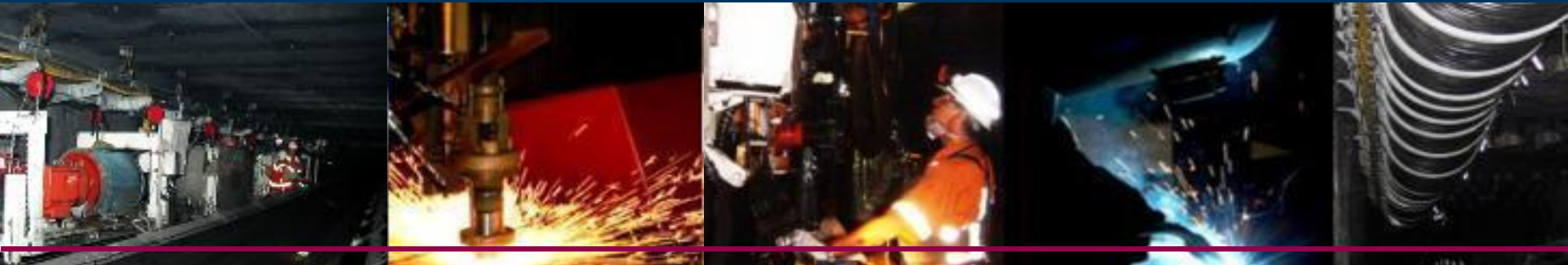




# TUNNELLING



Safety & Quality Supported by Innovation and Design

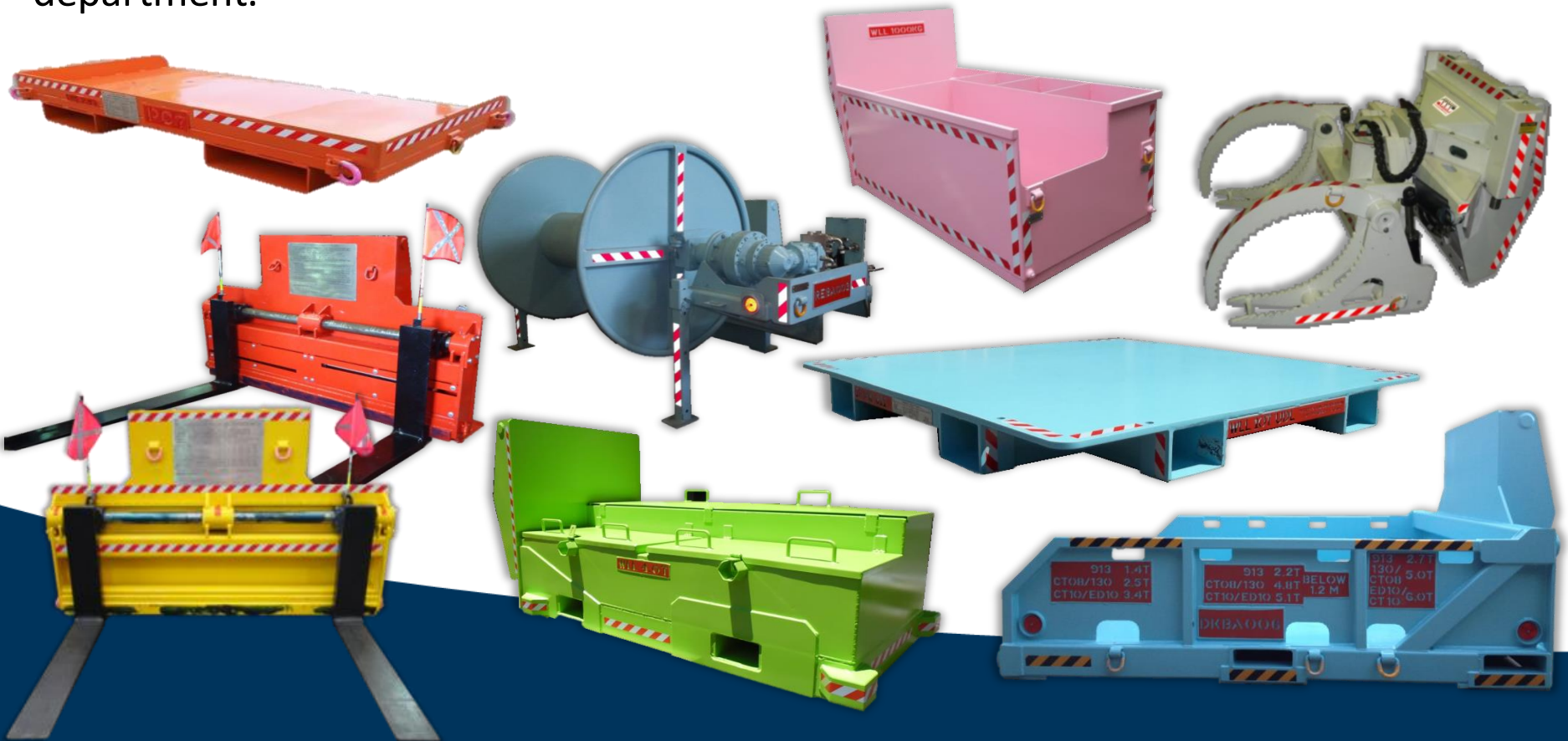
Proudly Accredited & Certified;  
QMS ISO 9001:2008 | OH&S AS/NZS 4801:2001





We offer an extensive range of LHD and Materials Handling Equipment.

From a single customised item to multiple bulk orders; all equipment can be tailored to customer specification through our design and engineering department.



- 2 wheel and 4 wheel options are available,
- Large flatbed surface area,
- Low profile trailer,
- Heavy duty wheels and stub axle,
- Safety chains,
- Wheel chocks and drop down stability legs,
- Tie down Rud lugs on trailer,
- Retaining side posts option,
- Weight, safety and operational signage attached,
- Non-slip floor plate,
- Jost Leg.

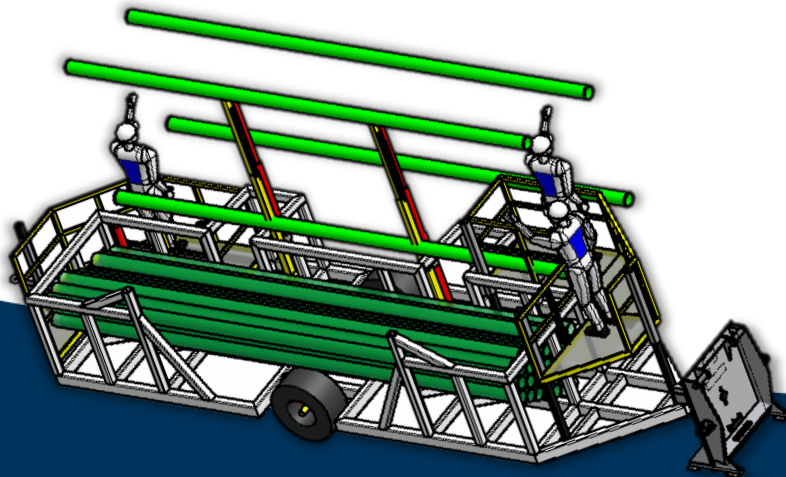


- The 10 cubic metre unit can carry a payload of 13T allowing the use of Ballast rated at 1.3T/cubic metre.
- QDS tow attachment.
- Not recommended for concrete.
- Hydraulically operated sliding push plate.
- Hydraulic brakes.
- DPI design registered.
- Ability for bottom or rear discharge.





- Front & rear platform.
- Mechanised to minimise manual handling.
- Tow connection at each end.
- QDS Pintle hook.
- Operators allowed on board during install.
- Suit transport, installation and salvage of 150mm diameter x 6m Victaulic pipes.
- Personnel platforms designed and located to suit tunnel dimensions.

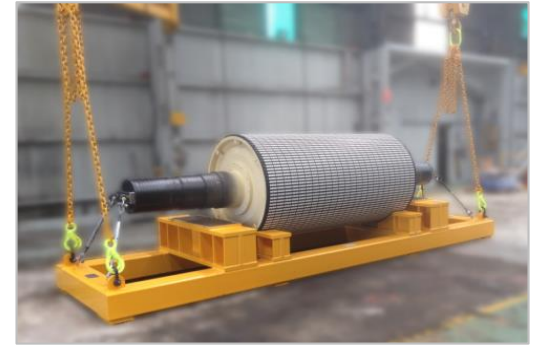
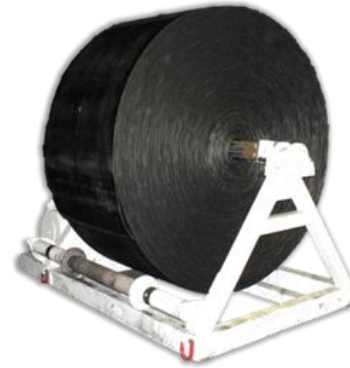


- Crawler mounted self-advancing belt conveyor return end,
- Capable of extending high capacity section belt conveyors,
- Features a patented belt aligning system,
- High mass (35 tonnes) to resist belt tensions,
- Available to suit any belt width,
- Improved inbye end modified to accept side loading from shuttle car,
- Loading arrangement from continuous miner or roadheaders.



Macquarie Manufacturing offers an extensive range of Conveyor Services including;

- Engineering, Design and Technical Advice,
- Conveyor Belt Systems,
- Reconditioning of Conveyor Belt,
- Rubber Lining,
- Field Service and Site Maintenance,
- Pulley and Idler Lagging,
- Hot and Cold Splicing.





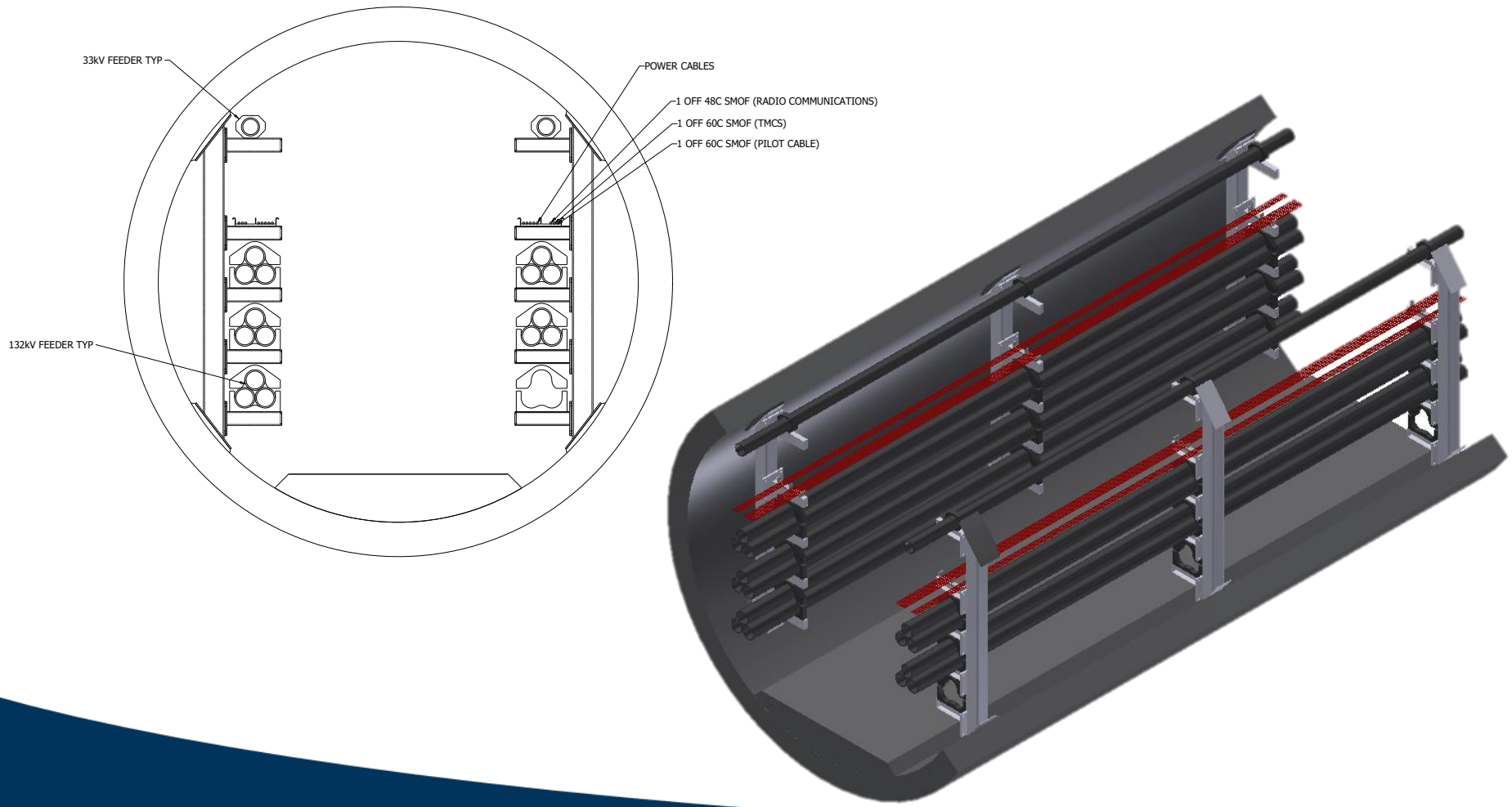
# CASSETTE LOADER

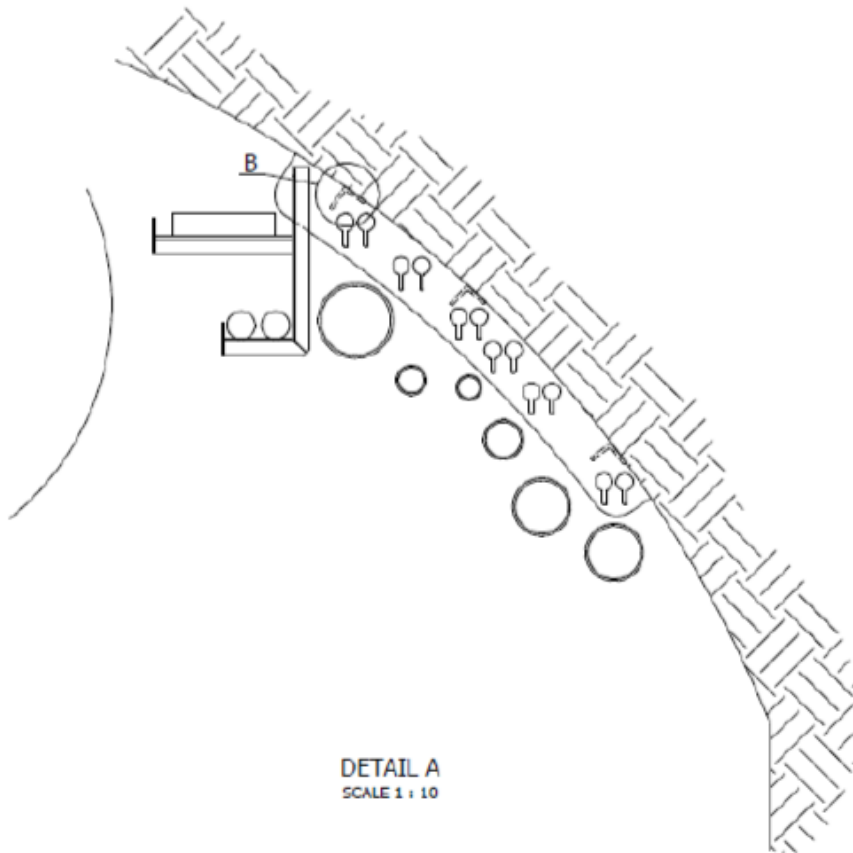
The Cassette Loader has been designed to efficiently transfer the Bolt Cassette onto and off the continuous miner whilst in service underground in the development heading, thereby replenishing the supply of bolting materials.

The Cassette is pulled in using a specifically designed crosshead mounted on twin drive chains. These drive chains permit the crosshead to travel the length of the jib and are powered with a hydraulic motor. Unloading is achieved with the crosshead pushing directly onto the Cassette.

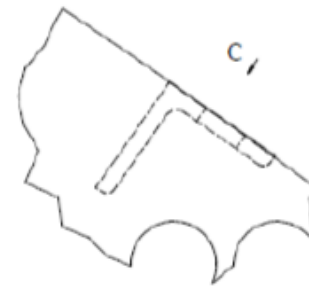


# CABLE BRACKETS

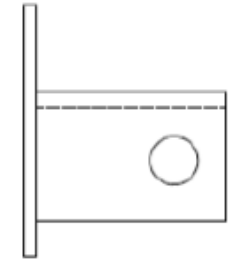




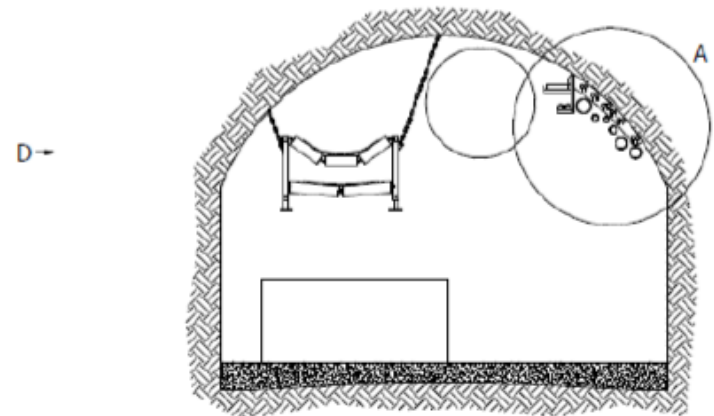
DETAIL A  
SCALE 1 : 10



DETAIL B  
BRACKET MOUNTING ANGLE  
SCALE 1 : 2

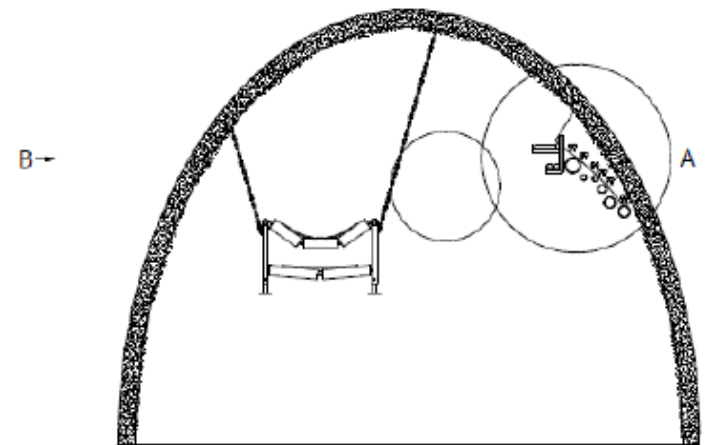
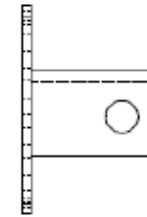
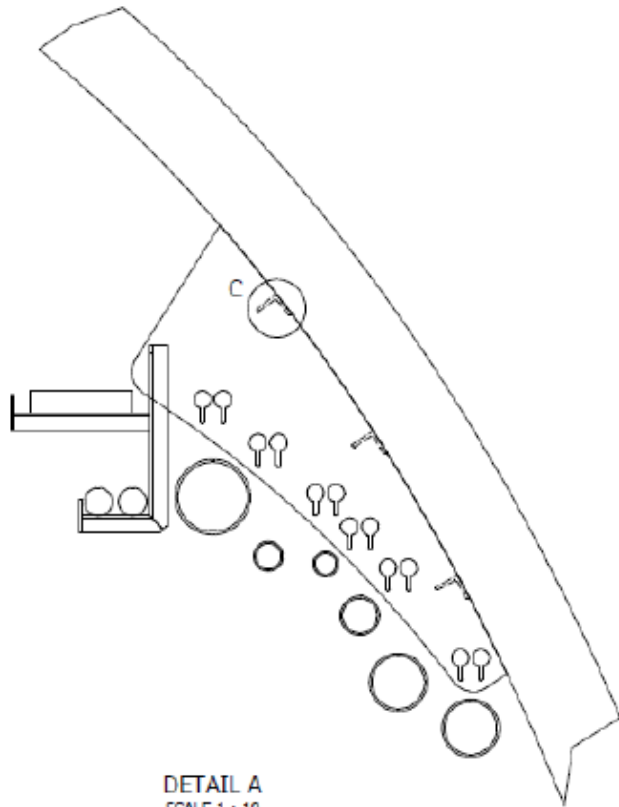


VIEW C  
BRACKET MOUNTING ANGLE  
SCALE 1 : 2

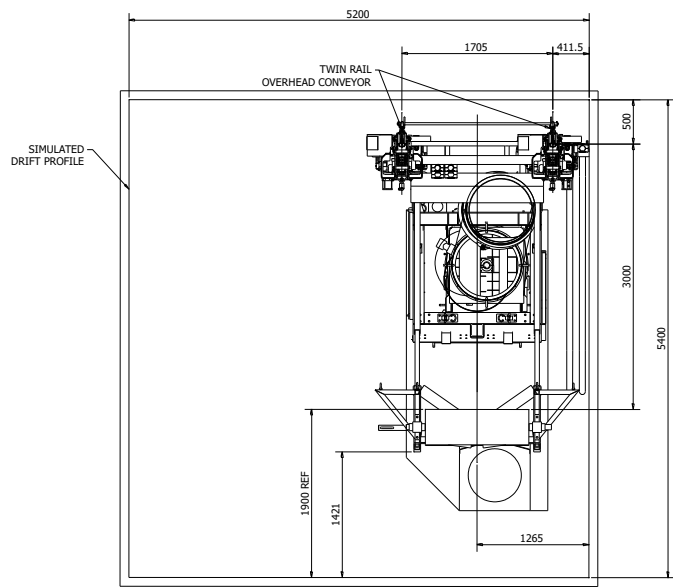
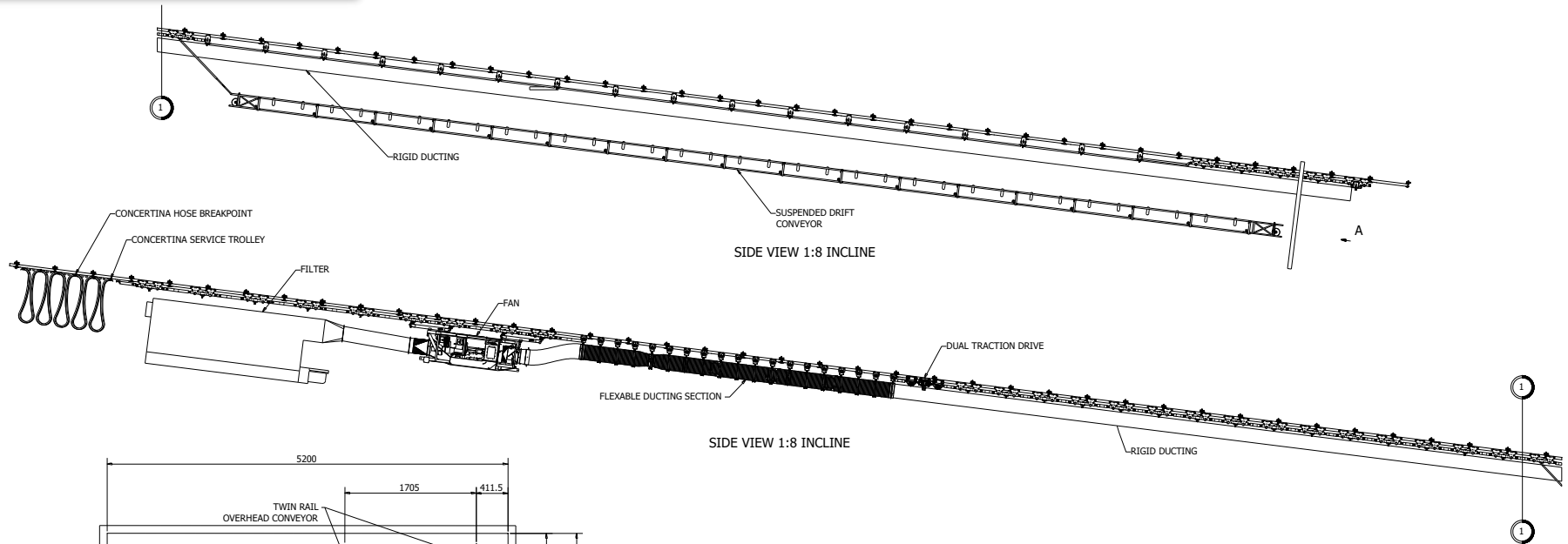


20578-00001  
SERVICES HANGING BRACKET - M&M DRIFT  
SCALE 1 : 50



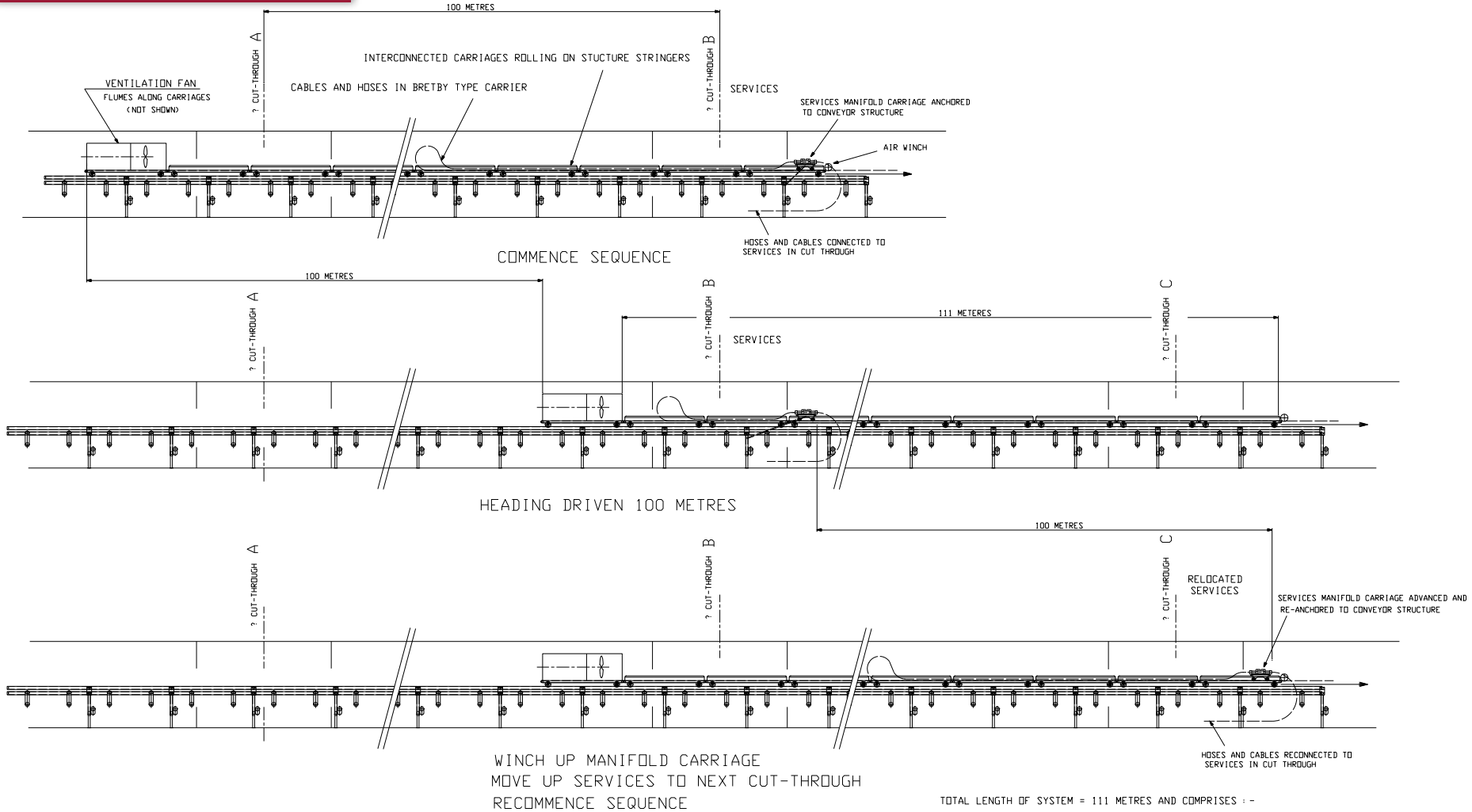


# DUAL RAIL DRIFT CONVEYOR W/ FAN & FILTER



VIEW A LOOKING OUTBYE  
 (UP THE DRIFT)  
 SCALE 1 : 25

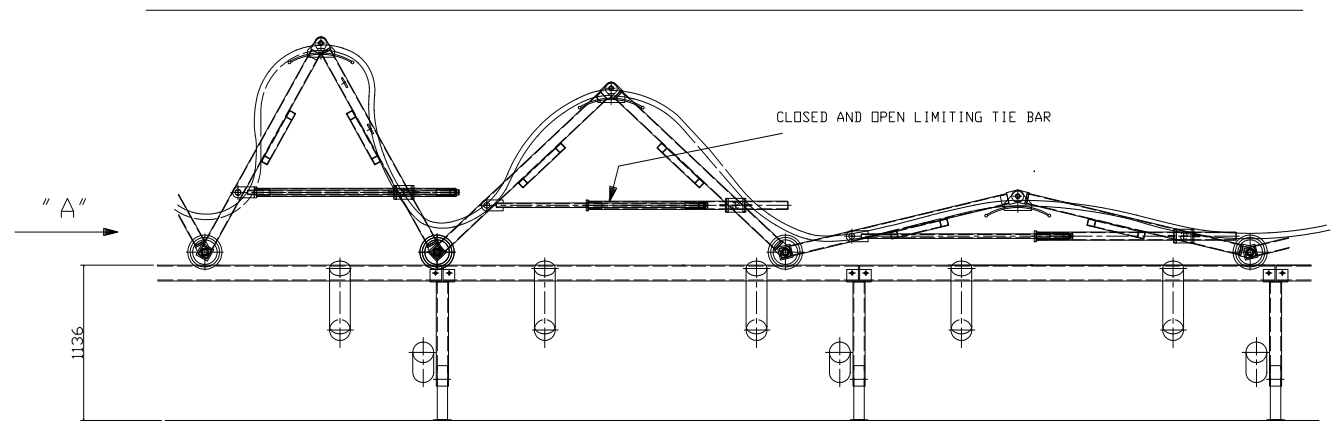
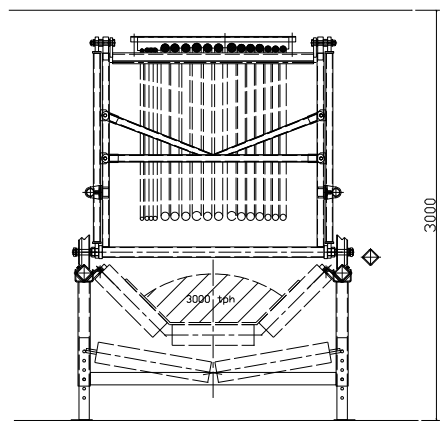
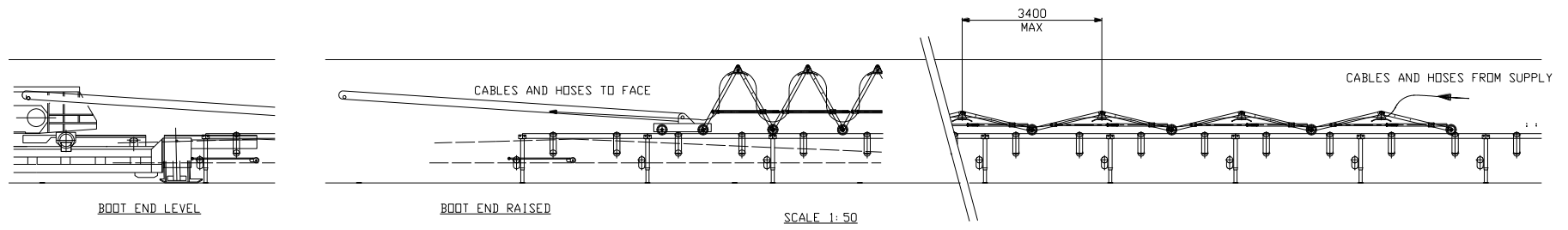
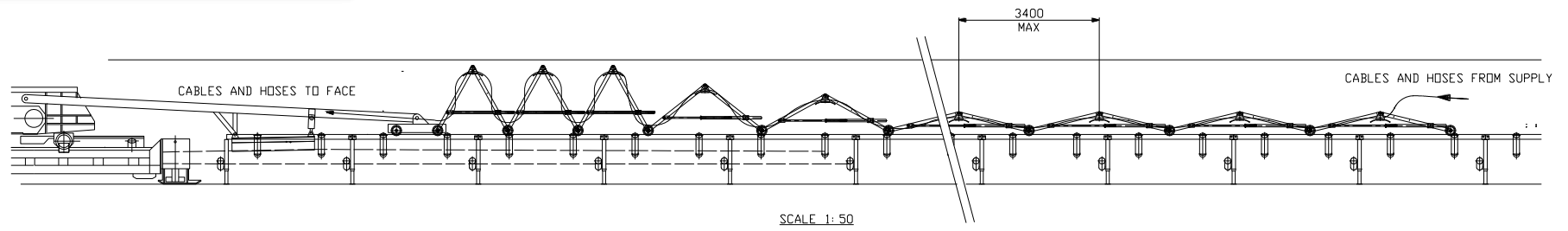
# STRUCTURE RIDING SERVICES SYSTEM



TOTAL LENGTH OF SYSTEM = 111 METRES AND COMPRISES :-  
 36 OFF CARRIAGES  
 1 OFF MANIFOLD CARRIAGE  
 1 OFF VENTILATION FAN CARRIAGE  
 1 OFF LENGTH OF BRETTY CABLE HANDLER



# SERVICES HANDLING SYSTEM



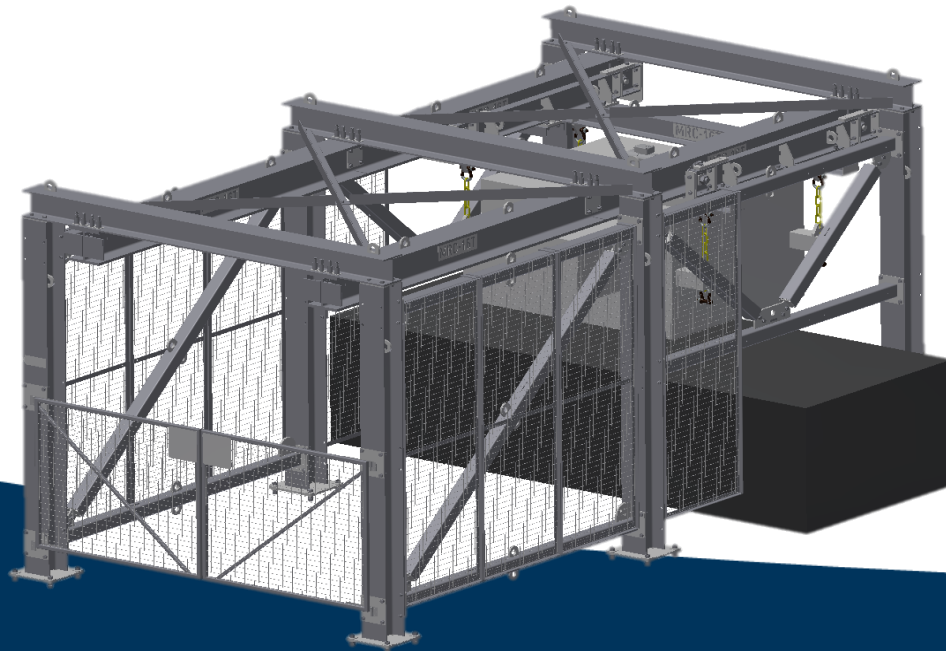
VIEW ON ARROW "A"

# DUST COLLECTORS





# CONVEYOR MAGNET CRANE SUPPORT STRUCTURE

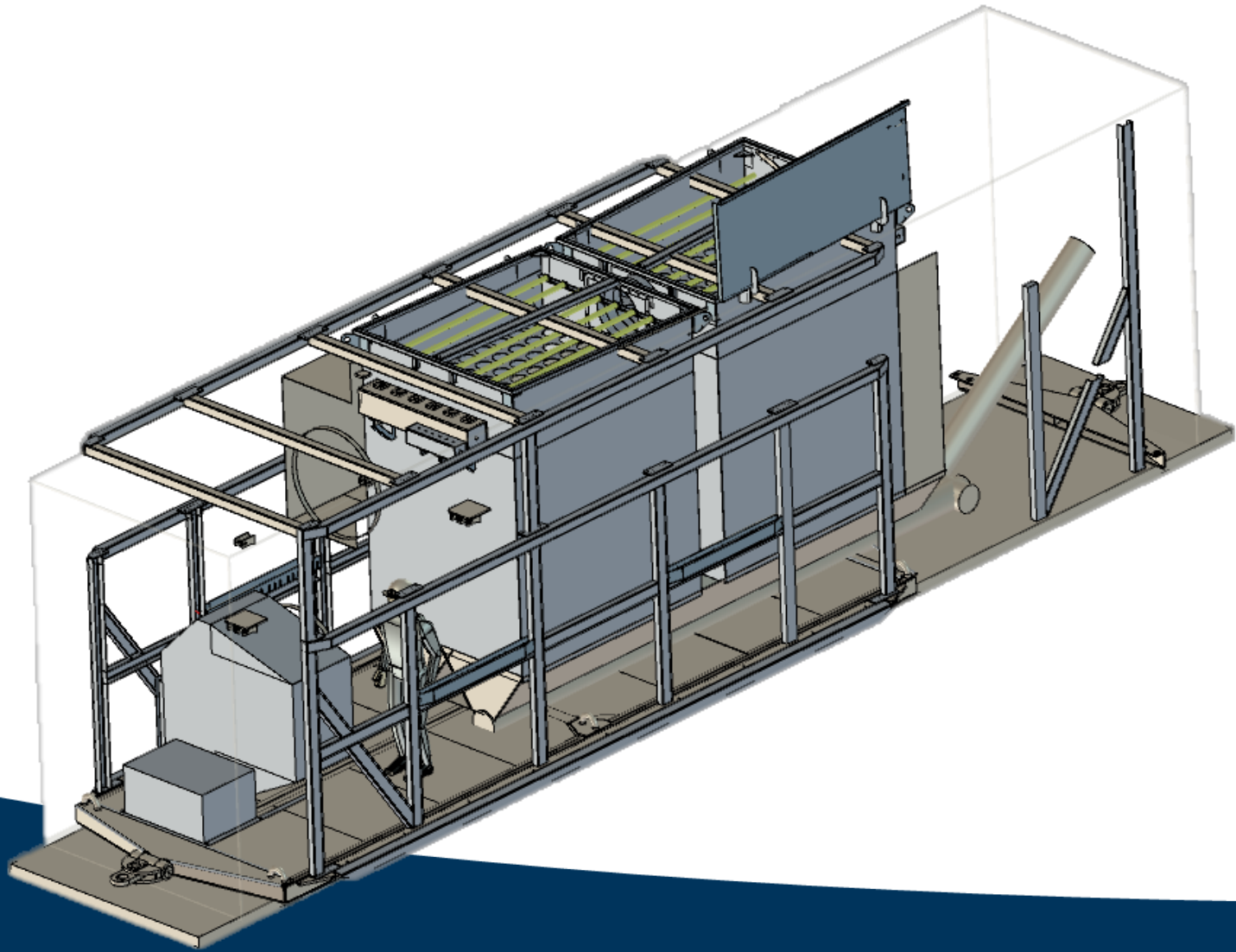




We recently completed the supply and installation of a Façade Noise and Vibration System for both the Break & Crusher buildings at the Centennial Mandalong Cooranbong facility, including removal of all existing cladding purlins girts and cleats from both buildings prior to installation.



# TUNNEL DUST COLLECTOR SLED



# VACUUM TANK TRAILER

